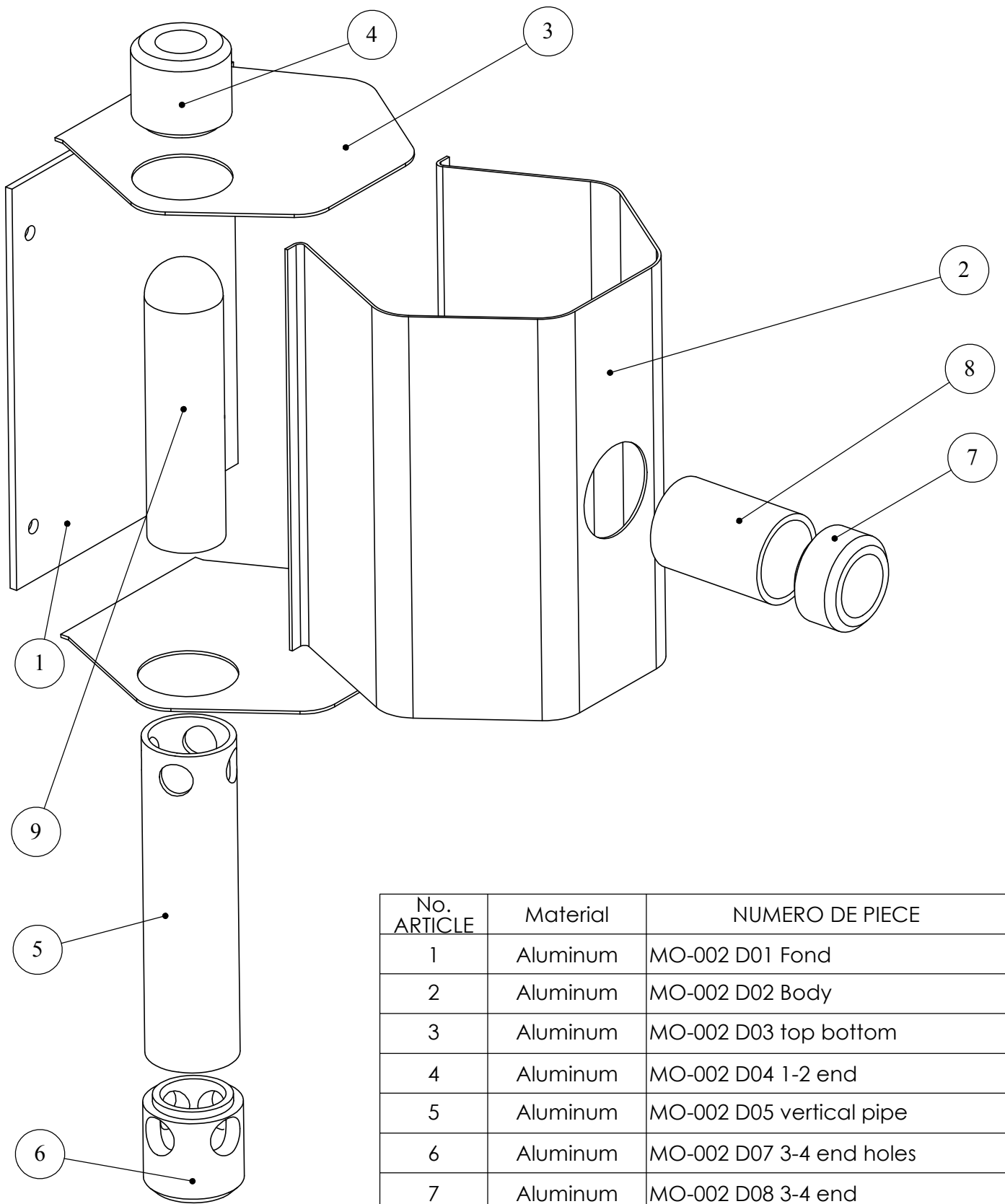


Oil separator bottle
 Welded aluminum
 tested for no leak at 0.5 bar pressure
 Important : No dust or burr inside

Finish after welding : Powder painting RED
 Finish quality is important

July 10 2012	Ball + weight suppressed for a single part "ballweight"	SC	A
Nov 8 2010	Origine drawing	SC	0
MAGIC 200	Ech: 1:2	Format: A4	Material: Material <not specified>
			Qty: 1
Heat Treatment: -	N°	DESIGNATION	Tol générale: ±0.2
Surface Treatment: -	MO-002 Separateur		Page 1 on 4



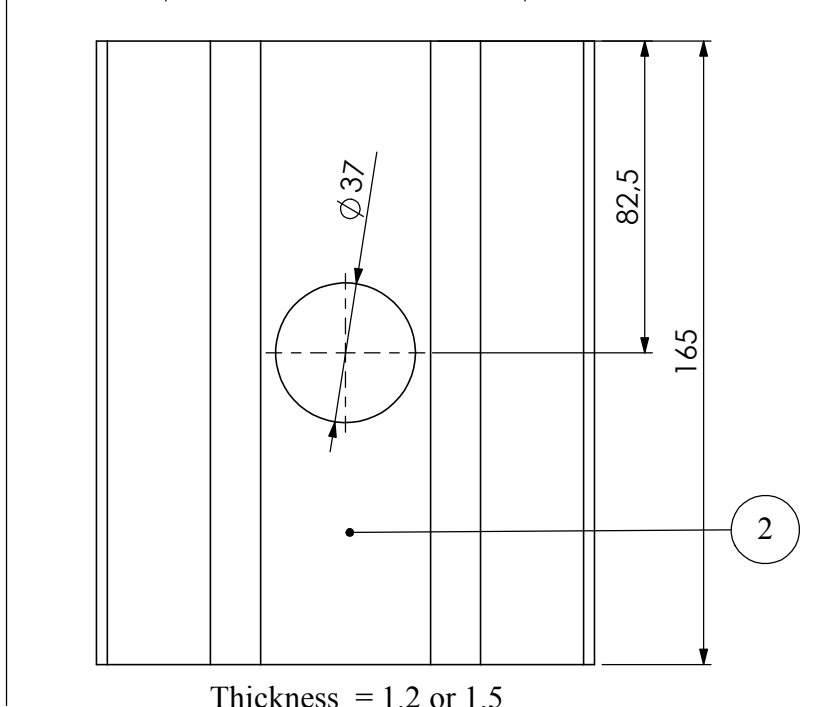
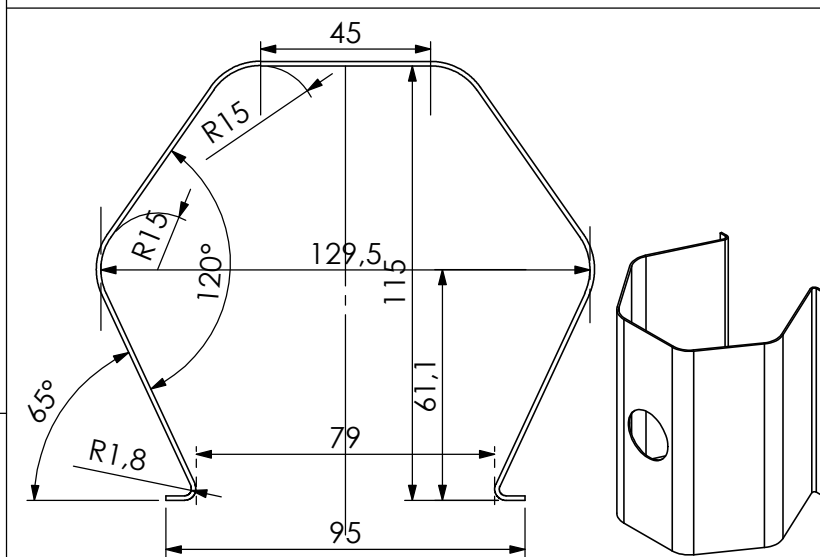
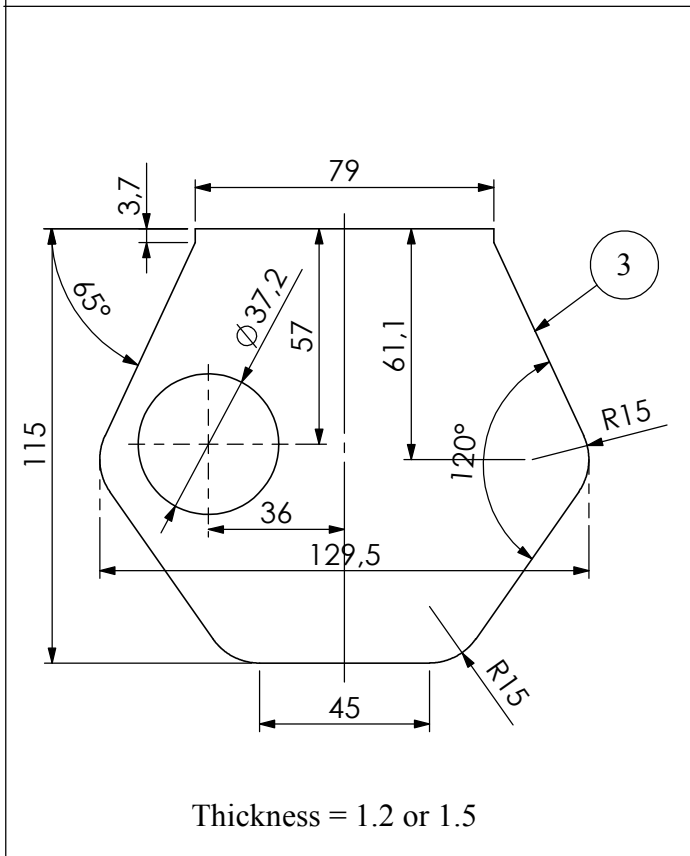
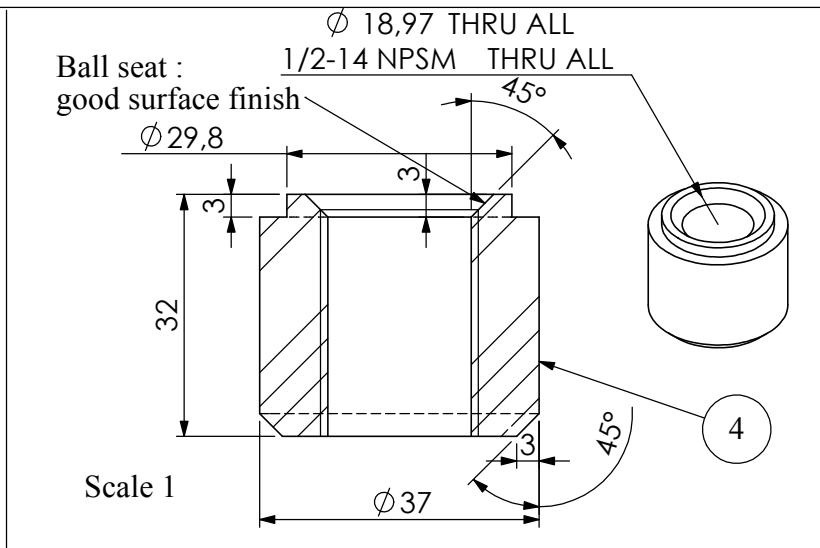
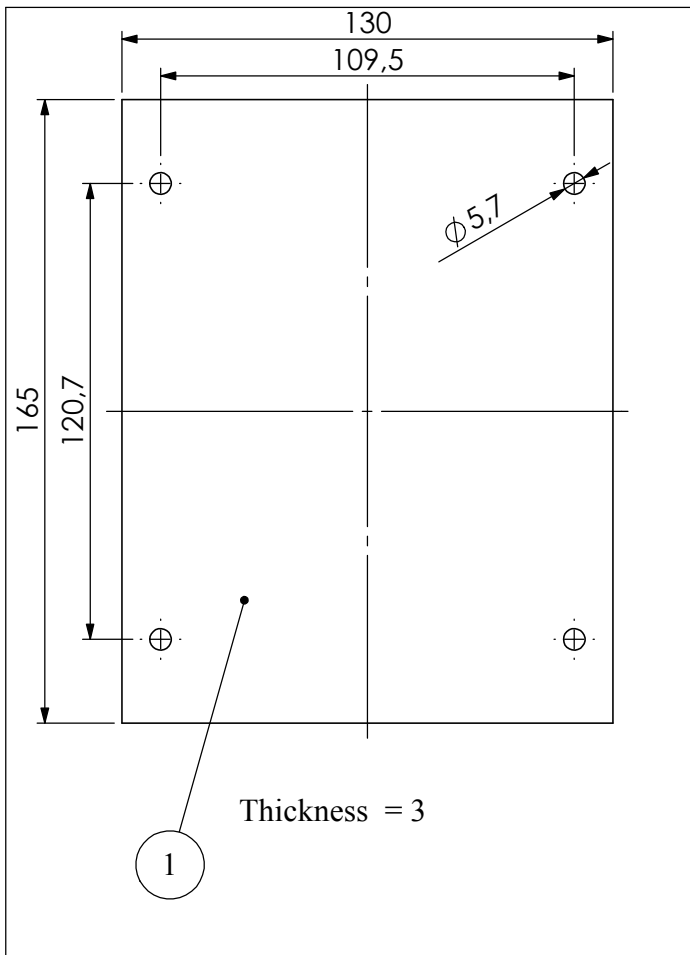
No. ARTICLE	Material	NUMERO DE PIECE	QTE
1	Aluminum	MO-002 D01 Fond	1
2	Aluminum	MO-002 D02 Body	1
3	Aluminum	MO-002 D03 top bottom	2
4	Aluminum	MO-002 D04 1-2 end	1
5	Aluminum	MO-002 D05 vertical pipe	1
6	Aluminum	MO-002 D07 3-4 end holes	1
7	Aluminum	MO-002 D08 3-4 end	1
8	Aluminum	MO-002 D09 horizontal pipe	1
9	Stainless steel	MO-002 D10 ballweight	1

July 10 2012	Ball + weight suppressed for a single part "ballweight"	SC	A
Nov 8 2010	Origine drawing	SC	0

MAGIC 200

Ech: 1:2	Format: A4	Material: Material <not specified>	Qty: 1
		Weight in gr: 1229.62	Tol générale: ±0.2

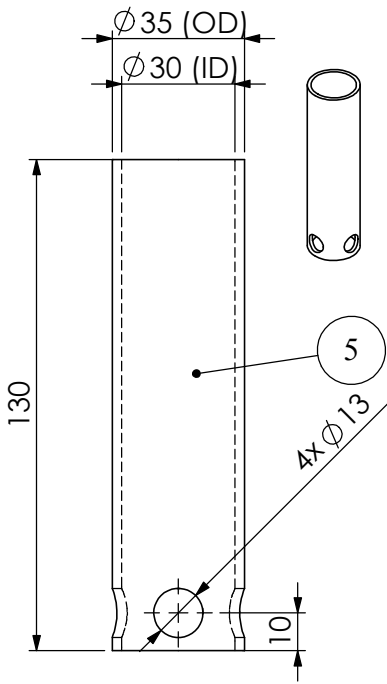
Heat Treatment: -	N°	DESIGNATION
Surface Treatment: -	MO-002 Separateur	



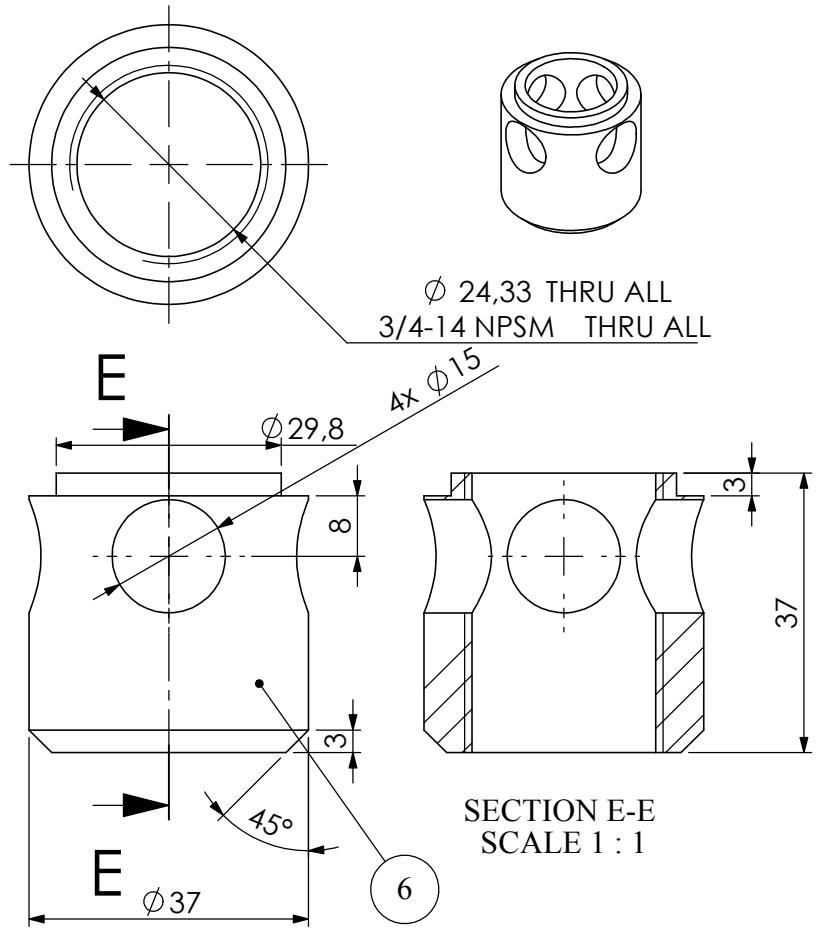
July 10 2012	Ball + weight suppressed for a single part "ballweight"	SC	A
-	Origine drawing	SC	0

MAGIC 200	Ech: 1:2	Format: A4	Material: Aluminum	Qty: 1
			Weight in gr: 172.92	Tol générale: ±0.2

Heat Treatment: -	N°	DESIGNATION
-------------------	----	-------------

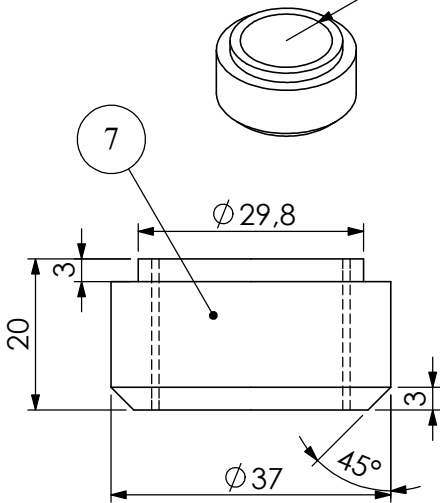


ID and OD as close as possible to 30 and 35 but to be adjusted according to indian raw material In such case parts 4, 6, 7 and 9 will be change accordingly

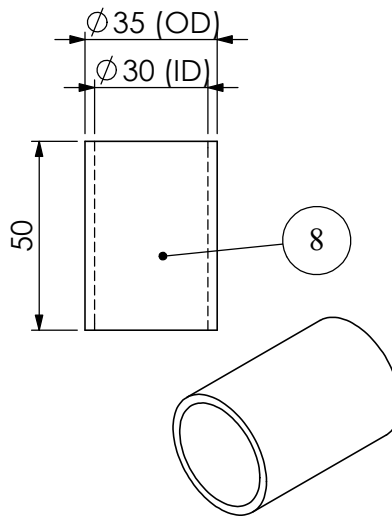


SECTION E-E
SCALE 1 : 1

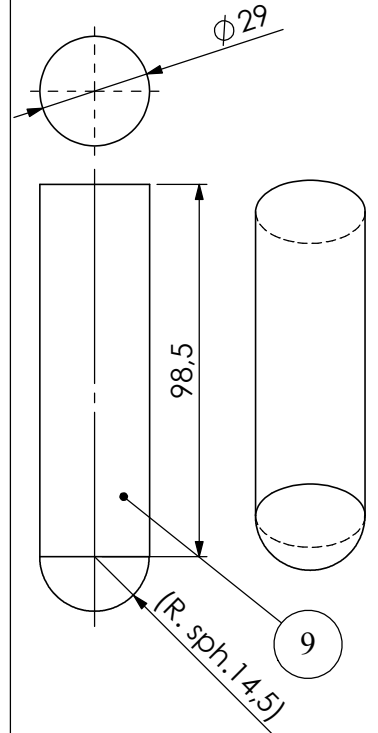
Ø 24,33 THRU ALL
3/4-14 NPSM THRU ALL



Scale 1



ID and OD as close as possible to 30 and 35 but to be adjusted according to indian raw material In such case parts 4, 6, 7 and 9 will be change accordingly



Stainless steel

July 10 2012

Ball + weight suppressed for a single part "ballweight"

SC A

-

Origine drawing

SC 0

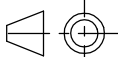
MAGIC 200

Ech: 1:2

Format: A4

Material: Aluminum

Qty: 1



Weight in gr: 85.93

Tol générale:
±0.2

Heat Treatment: -

N°

DESIGNATION

Surface Treatment: -

MO-002 Separateur

Page 4 on 4